

Paul Benton

Managing Director, International

Suzie Ali-Hassan

International Business Director

Sophie Green

International Accelerator Manager

Michelle Michelucci

Head of International Events

Nicola Hudson

Business Development Executive, International

Lauren Hayes

Business Development Manager, International

Liz Yearwood

International Operations Executive

Peter Ellingworth

Chief Executive

Angela Jeffery

Senior Manager, Operations

Leads ABHI, as well as senior government and NHS engagement.

ABHI Groups: [ABHI Board](#) | [HR Leaders Network](#)

Supports UK businesses to grow in international markets.

ABHI Groups: [International](#)

Richard Philips

Executive Director, Policy and Partnerships

Eleanor Charsley

Director, Government Affairs

Jonathan Evans

Director of Communications

Judith Mellis

Senior Manager, UK Market Affairs

Owain Prescott

Researcher, Government Affairs

Responsible for ABHI's strategy, communications, member groups, healthcare policy development, trade and parliamentary activity.

ABHI Groups: [Public Affairs](#) | [Musculoskeletal](#) | [Cardiovascular](#) | [Patient Safety](#) | [Scotland](#)

Luella Trickett

Executive Director, Medical Devices, Value and Access

Addie MacGregor

Sustainability Manager

Leads on embedding value-based procurement, and adoption and spread of technologies across innovation pathways, and the sustainability agenda.

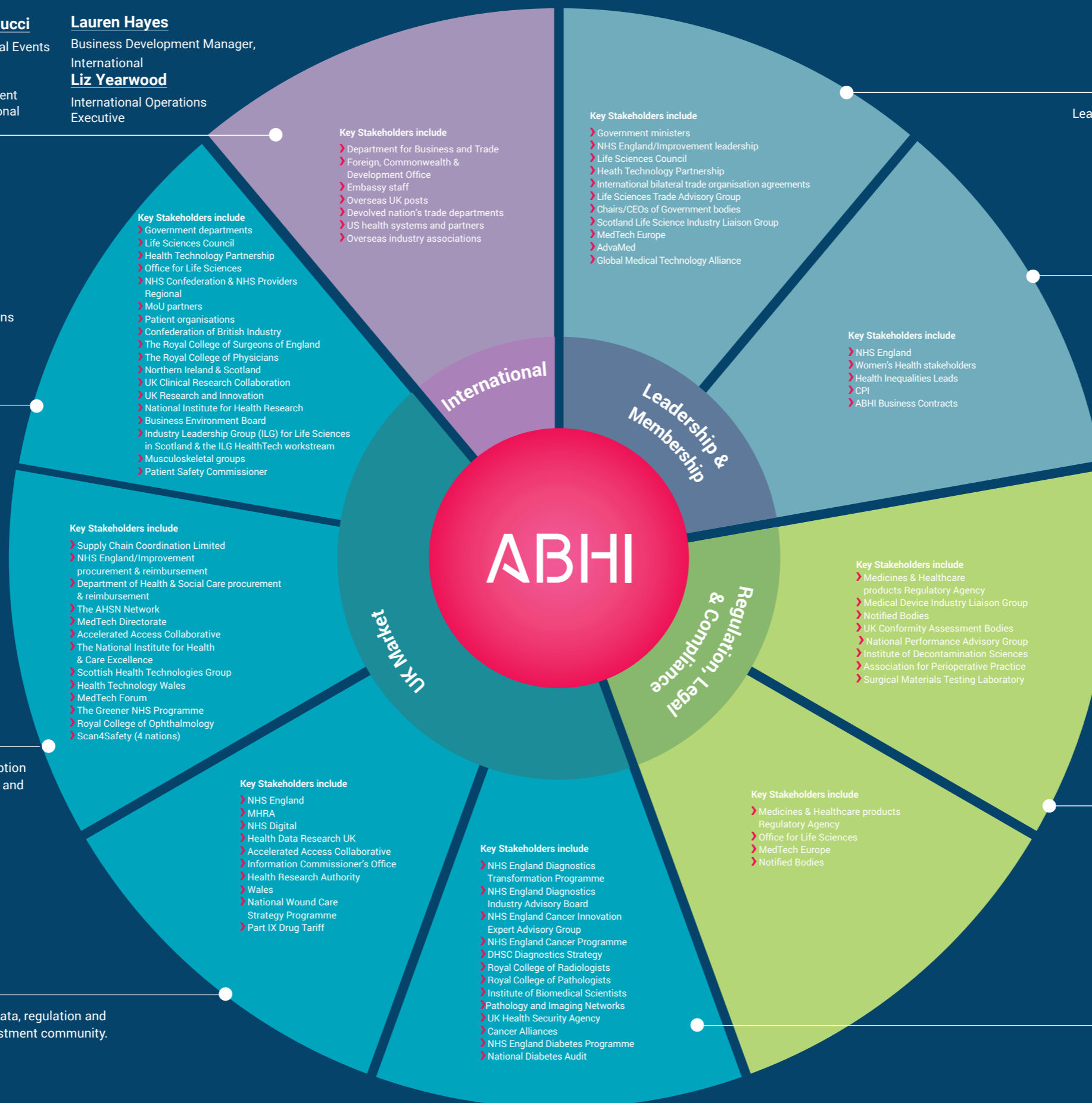
ABHI Groups: [Value & Access](#) | [Commercial](#) | [Market Access](#) | [Sustainability](#) | [Ophthalmology](#)

Andrew Davies

Executive Director, Digital Health

Responsible for ABHI's digital health agenda, including data, regulation and market access work streams, as well as links to the investment community.

ABHI Groups: [Digital Health](#) | [Wound care](#) | [Respiratory & Anaesthetics](#) | [Robotic Assisted Surgery](#)



Jane Lewis

Chief Operating Officer

Responsible for management of ABHI's financial processes and risk management procedures. Jane also leads ABHI's work on health equity, E,D &I.

ABHI Groups: [HR Leaders Network](#) | [Health Equity and Women's Health](#)

Phil Brown

Director, Regulatory & Compliance

Responsible for present and future medical device, regulatory policy, legal, compliance, ethics and credentialing.

ABHI Groups: [Regulatory](#) | [Decontamination](#) | [Legal Issues](#) | [Surgical](#) | [Credentialing](#)

Steve Lee

Director, Diagnostics and Digital Regulation

Leads ABHI's diagnostics regulatory strategy.

ABHI Groups: [Regulatory](#) | [Diagnostics](#)

Nishan Sunthares

Executive Director, Diagnostics

Leads ABHI's strategy to make high quality diagnostic technologies accessible to all who need them.

ABHI Groups: [Diagnostics](#) | [Diabetes](#)